

# edubrands™

For more Information contact:

PAUL AIELLO

paello@heatinc.ca

T. 416.538.9898

F. 416.538.7166

TF. 1.800.757.4868

www.heatinc.ca

H E  T

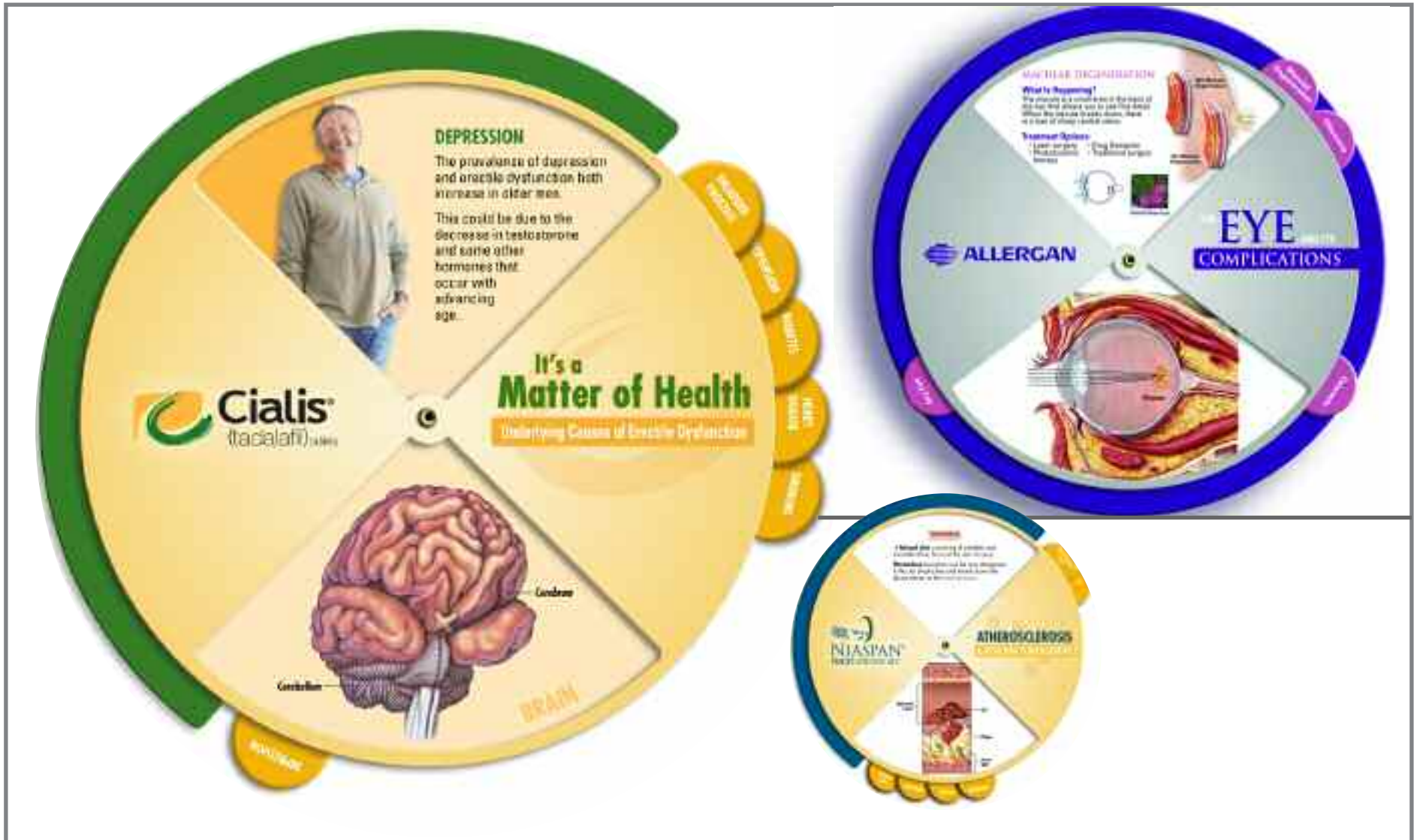
HEALTH EDUCATION AND TRAINING

Representing One World DMG



# eduwheel™

The EduWheel from One World DMG is an innovative educational tool ideal for communicating important health information to patients. This cost-efficient tool helps physicians visually walk patients through diagnosis and treatment simply by sliding marked tabs on the wheel. Beautifully illustrated anatomical images and educational text appear in viewing windows.





The EduChart™ from One World DMG is a great patient education tool for the doctor's exam room. Each EduChart features medically-accurate 3D sculpted anatomy and beautifully-rendered illustrative overlays, created to help patients understand complex anatomy and treatment. The slim profile requires minimum counter space, but delivers maximum impact as a communication tool for physicians and nurses.





**edudeck**™

The EduDeck from One World DMG, packs a huge amount of patient education into one compact resource tool... convenient and small enough to fit in a doctor's lab coat. This handy swivel deck can be printed on a write-on/wipe-off surface to give doctor's the flexibility to customize consultations with patients.





# edudeck™

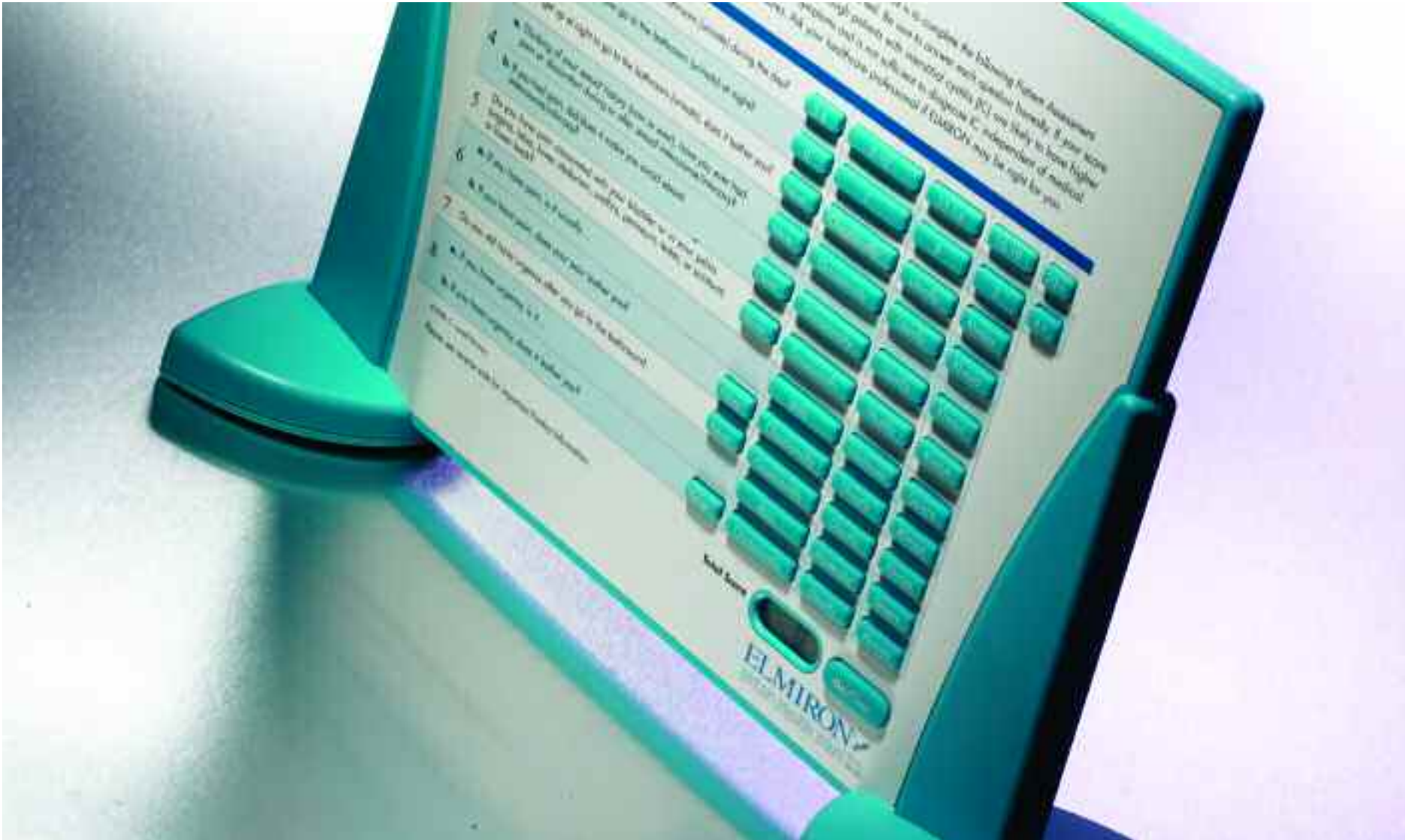
L I B R A R Y

The EduDeck Library from One World DMG packs volumes of health education information into a compact series of easy-to-use, easy-to-carry, decks. Information can be divided as required... perfect for companies wishing to offer physicians patient education tools for a wide variety of therapeutic areas. The EduDeck Library is also a great solution for brands with multiple indications.





The EduScreen from One World DMG prompts patients to answer a series of health questions that are then calculated to determine what action should be taken. These electronic questionnaires encourage patients to speak to their doctor about the results, or suggest a doctor consider further testing etc. Designed for the exam or waiting room, the EduScreen provides ample room on back for illustrative anatomical references or important drug information.





The innovative design of the Educase offers the convenience of a patient 7 day pill case and features a built-in 2-sided pul-out card. The card can be custom printed to provide educational and treatment information, medication schedules, emergency instructions, or any other educational message you want readily available to your patients.



# Sun. edudose™

The versatile EduDose™ from One World DMG combines the educational features of our EduDeck with the convenient utility of a seven day pill case. The large pill compartments provide ample storage for the patient's weekly meds, and are designed to be senior-friendly for easy access. A series of educational cards swing out from behind the case to provide needed patient information, as well as, medication schedules. These cards snap back into place and out of view when not in use.





The EduEasel from One World DMG is a great patient education tool for the doctor's exam room. Each EduEasel features medically-accurate and beautifully-rendered illustrations, created to help patients understand complex anatomy and treatment. The slim profile requires minimum counter space, but delivers maximum impact as a communication tool for physicians and nurses. The write-on/wipe-off surface allows doctors to customize patient consultations

